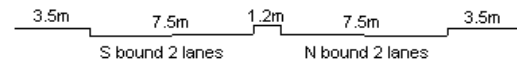


YEAR

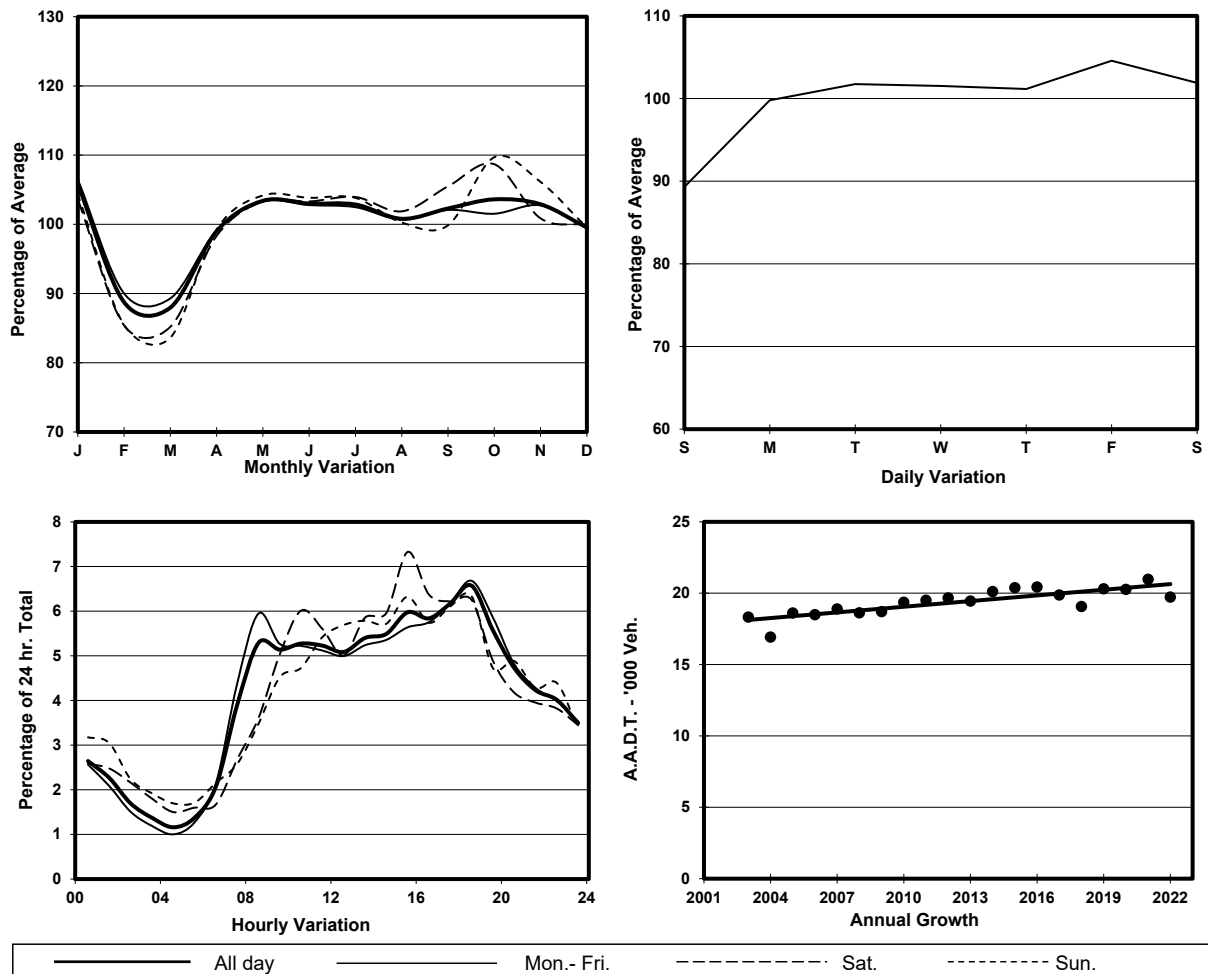
2022

LINK

TAI PO RD (from NAM CHEONG ST to KWEILIN ST)

CORE STATION
ROAD NETWORK
ROAD TYPE3009
MAJOR
PRIMARY DISTRIBUTOR

1. TRAFFIC FLOW VARIATION AND GROWTH



2. TRAFFIC CHARACTERISTICS (BY DIRECTION)

Parameter	All - Day	Mon. - Fri.	Sat.	Sun.
SOUTH BOUND				
A.A.D.T.	10180	10280	10150	10110
R 12 / 24 - %	63.8	64.5	62.7	61.8
R 16 / 24 - %	81.3	82.4	78.9	78.6
AM Peak Hour	0800-0900	0800-0900	0900-1000	0900-1000
One-way flow at AM peak hour	620	710	570	530
T - % (AM)	-	-	-	-
PM Peak Hour	1800-1900	1800-1900	1800-1900	1800-1900
One-way flow at PM peak hour	630	640	620	620
T - % (PM)	-	-	-	-
Prop.of commercial vehicles - 16 hr.	-	-	-	-
NORTH BOUND				
A.A.D.T.	9540	9900	10050	7620
R 12 / 24 - %	67.1	67.2	69.2	63.3
R 16 / 24 - %	86.7	87.2	86.6	83.6
AM Peak Hour	0900-1000	0800-0900	0900-1000	0900-1000
One-way flow at AM peak hour	430	490	450	270
T - % (AM)	-	-	-	-
PM Peak Hour	1800-1900	1800-1900	1700-1800	1700-1800
One-way flow at PM peak hour	670	710	750	550
T - % (PM)	-	-	-	-
Prop.of commercial vehicles - 16 hr.	-	-	-	-

3. OTHER INFORMATION AND COMMENT